



**Ashley Griffiths**

*Managing Director Gamma Telecom The Loop*





It's all about expectations



30 billion  
pieces of content

shared

every day on **facebook**



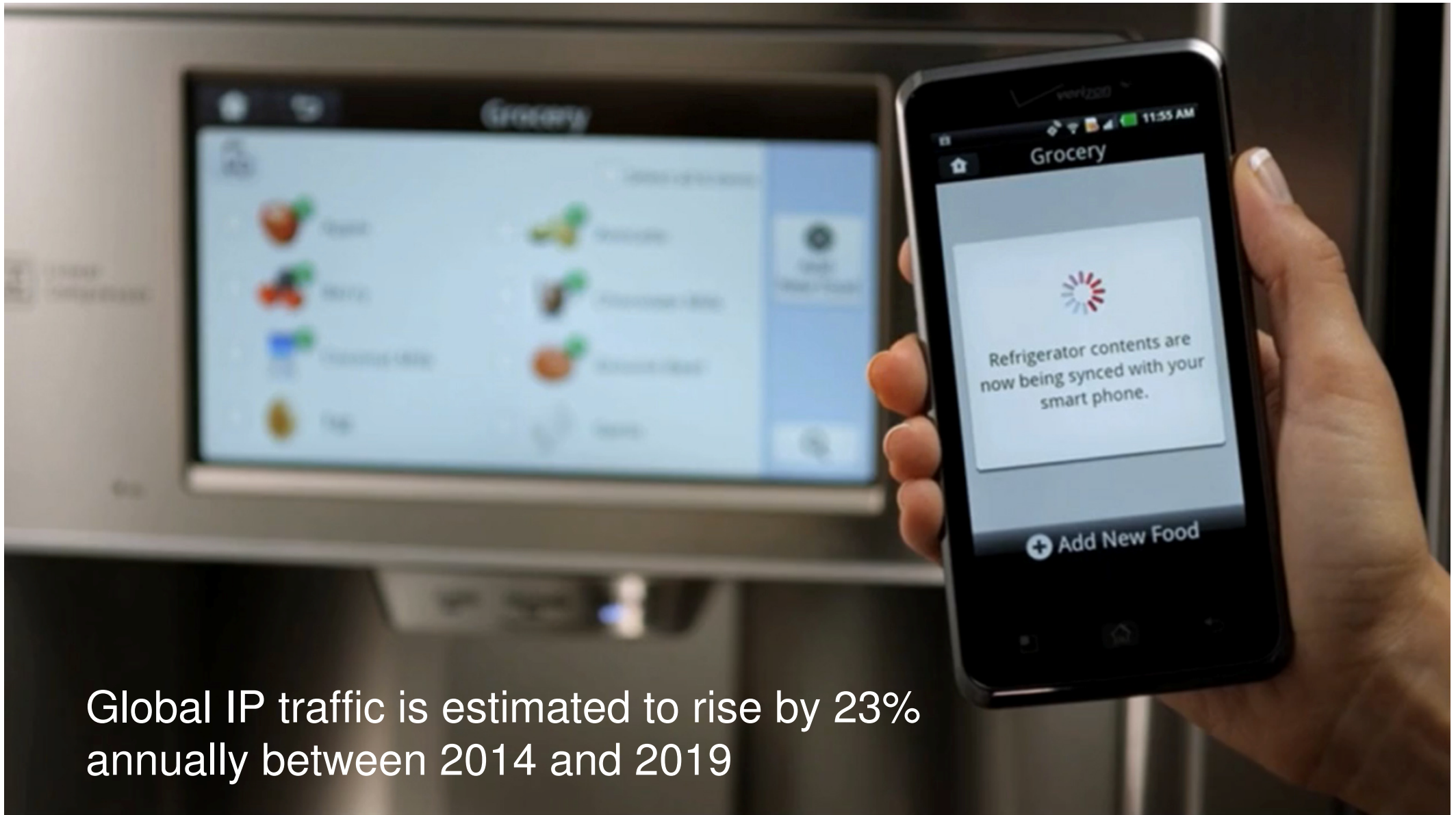
every minute **15** years worth  
of viewing content

is uploaded to

**You**  **Tube**







Global IP traffic is estimated to rise by 23% annually between 2014 and 2019

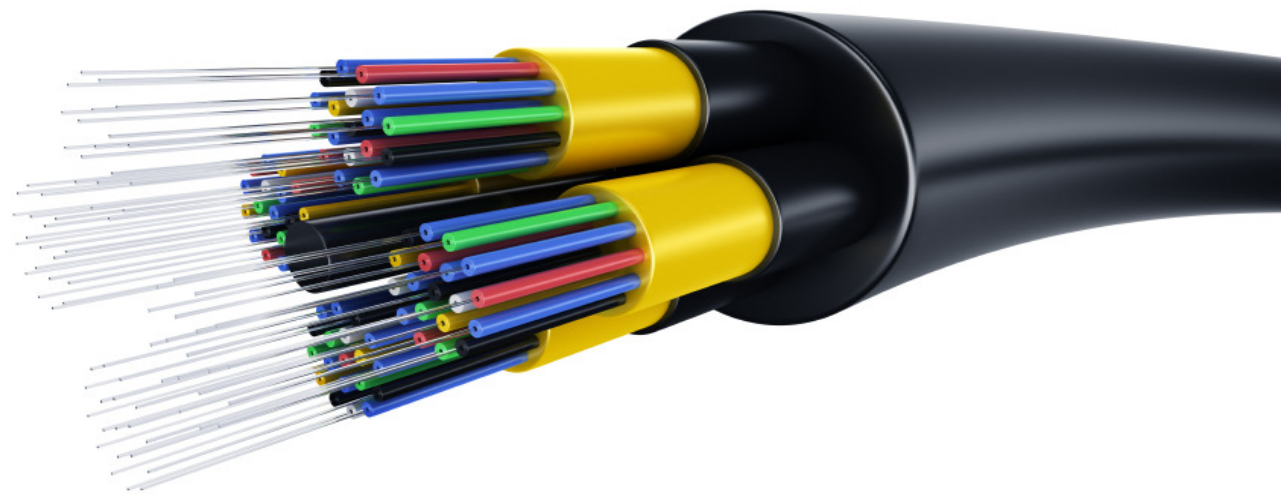
---

# Infrastructure needs are changing...



**Expectations grow..**  
**greater bandwidth**  
**Faster speeds**  
**Ubiquitous Wi-**  
**Fi**  
**More effective infrastructure**

# Greater need and reliance for fibre



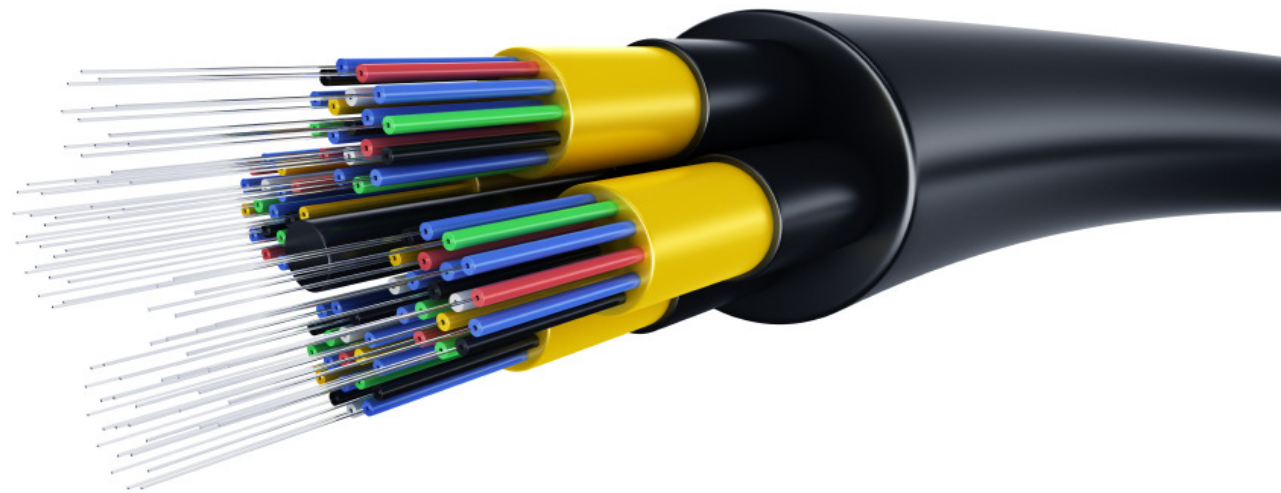


Remains the fastest

and most reliable

means of data

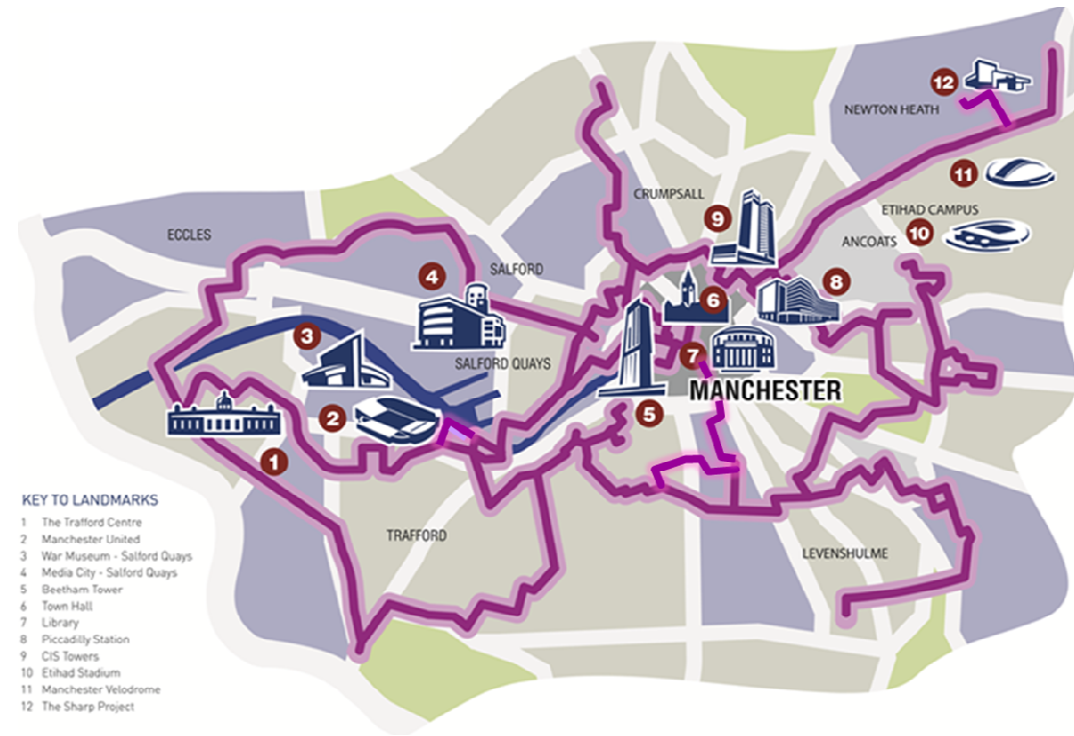
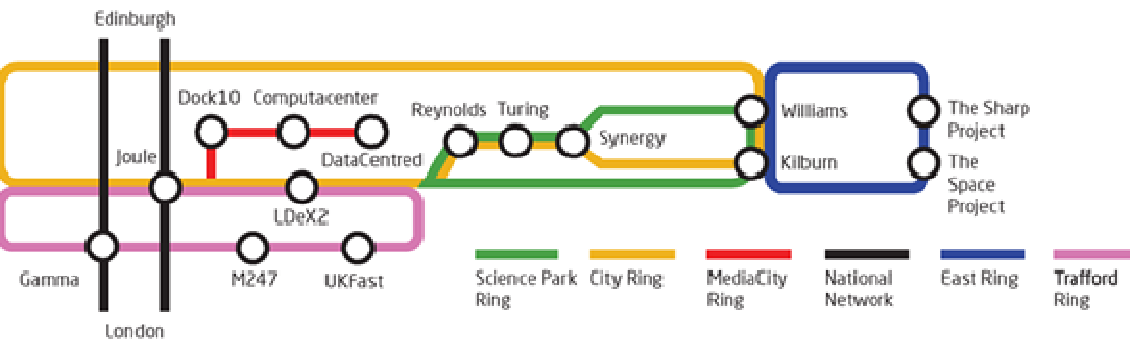
transport



# 27km+ of fibre

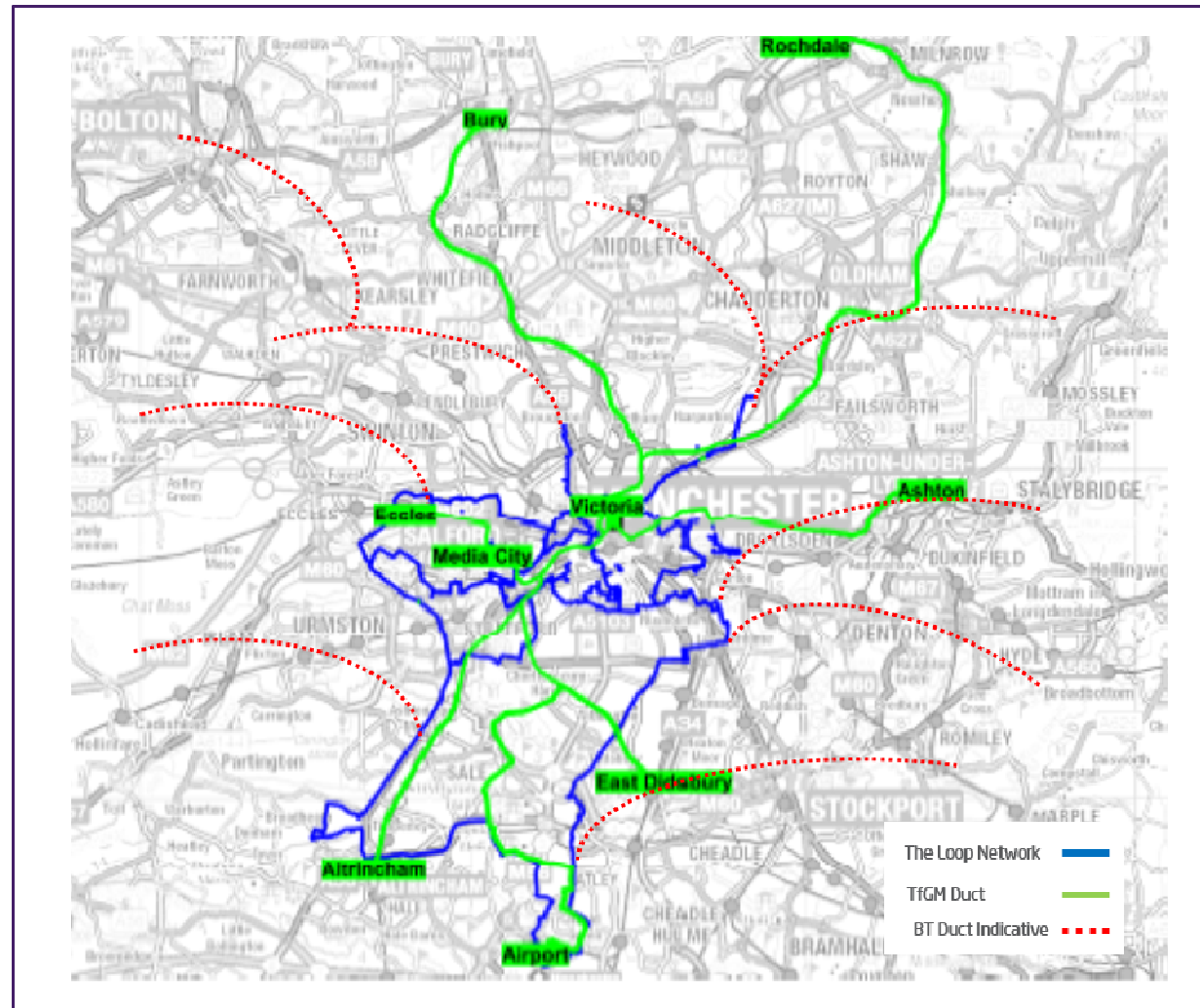
## Almost infinite capacity

34Km to Manchester Airport City



- KEY TO LANDMARKS**
- 1 The Trafford Centre
  - 2 Manchester United
  - 3 War Museum - Salford Quays
  - 4 Media City - Salford Quays
  - 5 Beetham Tower
  - 6 Town Hall
  - 7 Library
  - 8 Piccadilly Station
  - 9 CIS Towers
  - 10 Etihad Stadium
  - 11 Manchester Velodrome
  - 12 The Sharp Project

# Vision of A connected Manchester



THANK YOU!

Ashley Griffiths